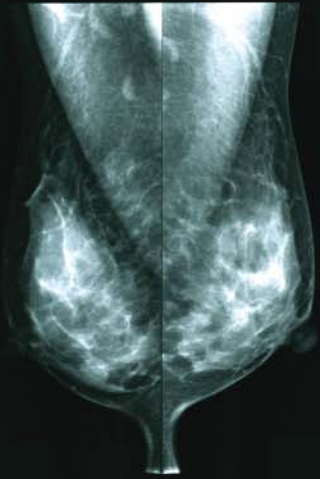




Hong Kong Sanatorium & Hospital

Mammography



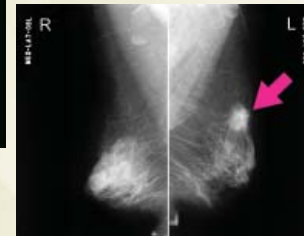
Department of Diagnostic & Interventional Radiology

Screening mammography is used to detect breast cancer at an early pre-clinical stage to reduce breast cancer morbidity and mortality. Mammography is an X-ray technique that takes pictures of the breasts using a dedicated machine. Radiation exposure is very minimal.

Mammography can detect tumours that are not palpable clinically. Non-invasive cancers that are not palpable and carry excellent prognosis are often detected by mammogram. Further, invasive cancers are often detected at a smaller size and therefore are less likely to metastasize to local lymph nodes or distant sites.



Normal Mammogram



Mammogram showing breast carcinoma (see arrow)

In order to perform a mammogram, the breast is compressed to flatten and spread tissue. It will be uncomfortable for a few seconds. The firm pressure is important so that the pictures of your breast are clear.

The Hong Kong Sanatorium & Hospital has the 1st digital mammography machine with computer aided

diagnostic (CAD) system in Hong Kong. This system marks suspicious area on the mammogram. It allows the radiologist to have a second unbiased look at the mammogram again. This system has proven to be effective in the detection of breast carcinoma.

How should you prepare yourself to be screened?

You will be asked to undress to the waist, so you should wear a 2 pieces out fit. Do not use bath powder or oil, perfumes, creams or deodorants on the day of your visit.

How will the results of screening be notified?

You or your family doctor will be contacted about the results within three days after screening.

What happen if the result is normal?

If the result is normal, you will be informed and scheduled for routine check up.

What happens if the result is abnormal?

If the result is abnormal, you will be seen by our Centre doctor for further explanation.

While mammography is the best single method for detecting breast cancer, it does not find all breast cancers. The false negative rate of mammography is approximately 10%. It is important for you to do Breast Self Examination on a continuing basis and if a lump is felt, consult with your health care provider.

2 Village Road Happy Valley Hong Kong

Tel : 2835 8900 Fax : 2835 8045